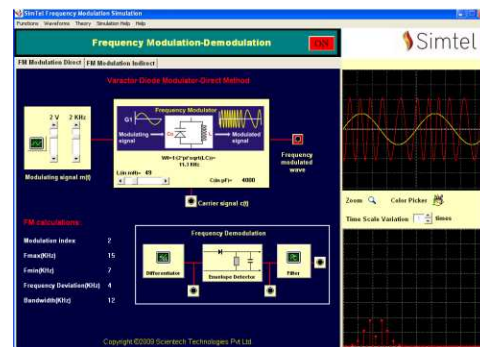
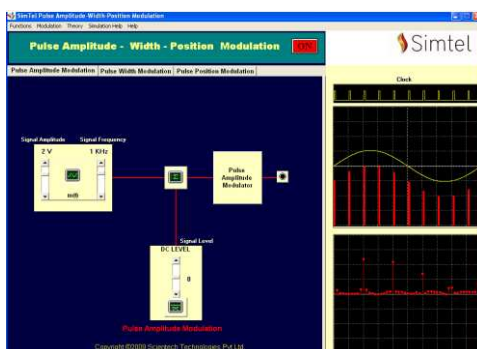
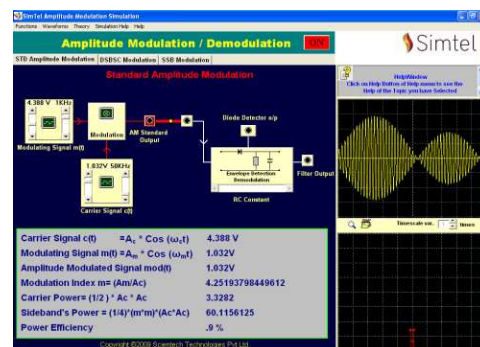
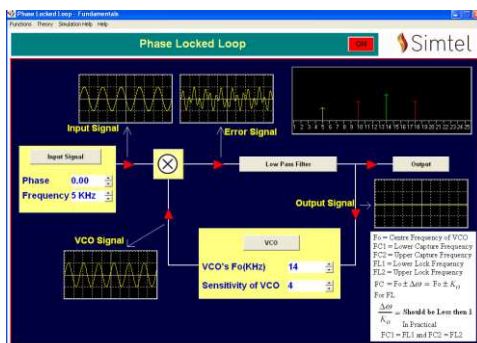


The study of electronics communication engineering starts with Analog communication. Simtel Analog Communication is an interactive tool for thorough understanding of this subject. After using this module user can be able to analyze & design different analog communication schemes. It consists of fundamental concepts of analog communication, performance analysis of modulated signals.

Software program windows:

Topics covered:

- ▶ **Fourier analysis**
- ▶ **Amplitude Modulation: Standard Amplitude Modulation, DSBC Modulation, SSB Modulation**
- ▶ **Frequency Division Multiplexing**
- ▶ **Frequency Modulation: Direct Modulation, Indirect Modulation**
- ▶ **Pulse Modulation: Pulse Amplitude Modulation, Pulse Width Modulation, Pulse Position Modulation**
- ▶ **Phase Locked Loop**
- ▶ **Super Heterodyne Receiver**



Designed & Develop by
Scientech Technologies Pvt. Ltd.

94, Electronic Complex, Pardesipura, Indore- 452 010 India,
© +91-731- 4211100, info@scientech.bz, www.ScientechWorld.com